

Barcode Dos and Don'ts

Multiple Barcodes



The nurse doesn't know which barcode to scan, resulting in frustration, non-compliance, and possible errors.

Single Barcode



A single barcode eliminates the guesswork and ensures that the product matches the correct entry in the database.

Removed Overwrap

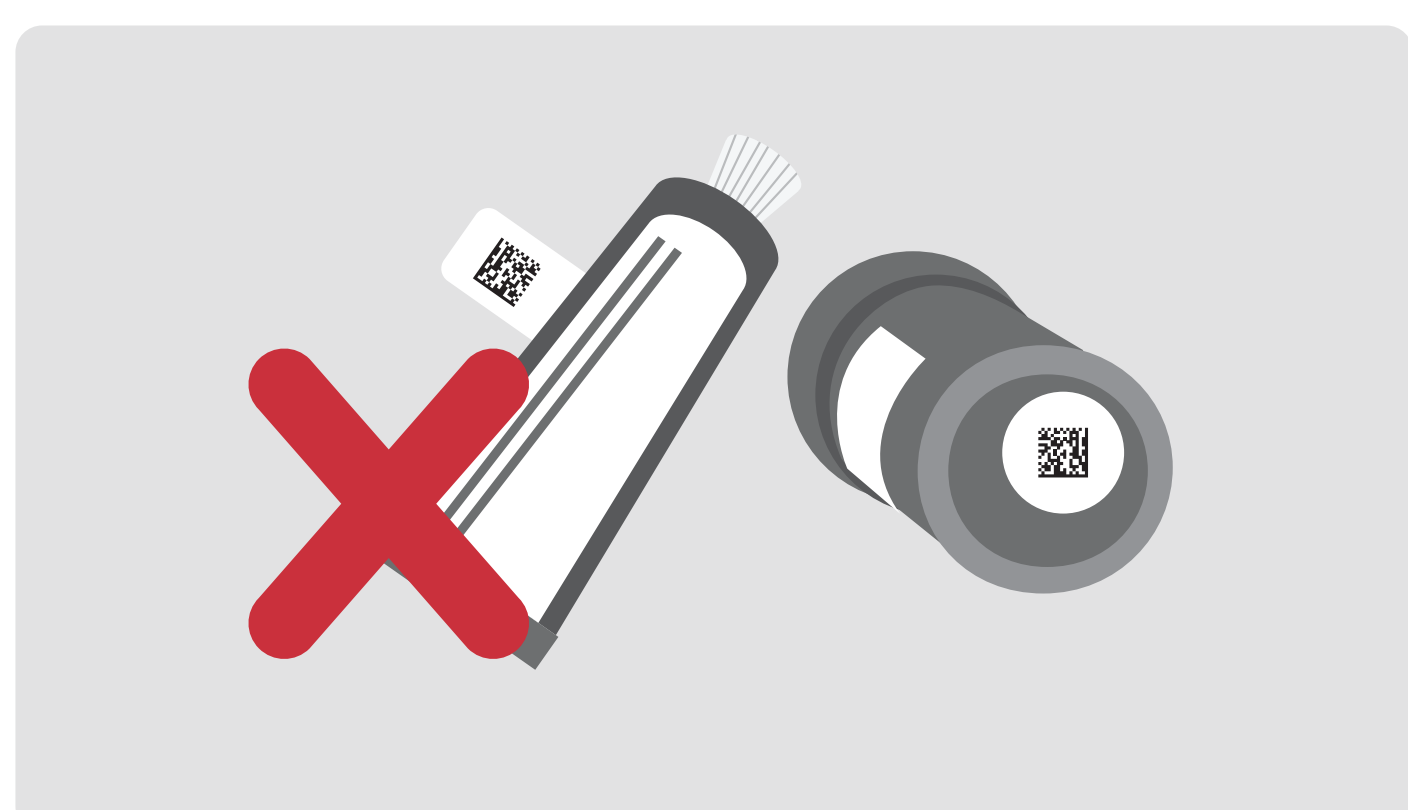


Having to remove the product from the light protective overwrap to affix the barcode decreases the stability of the product, resulting in unnecessary wastage, since the new expiry date would be based on when the Pharmacy Department removed the product from the overwrap. This decreases the medication's shelf life and increases workload.

Overwrap Intact

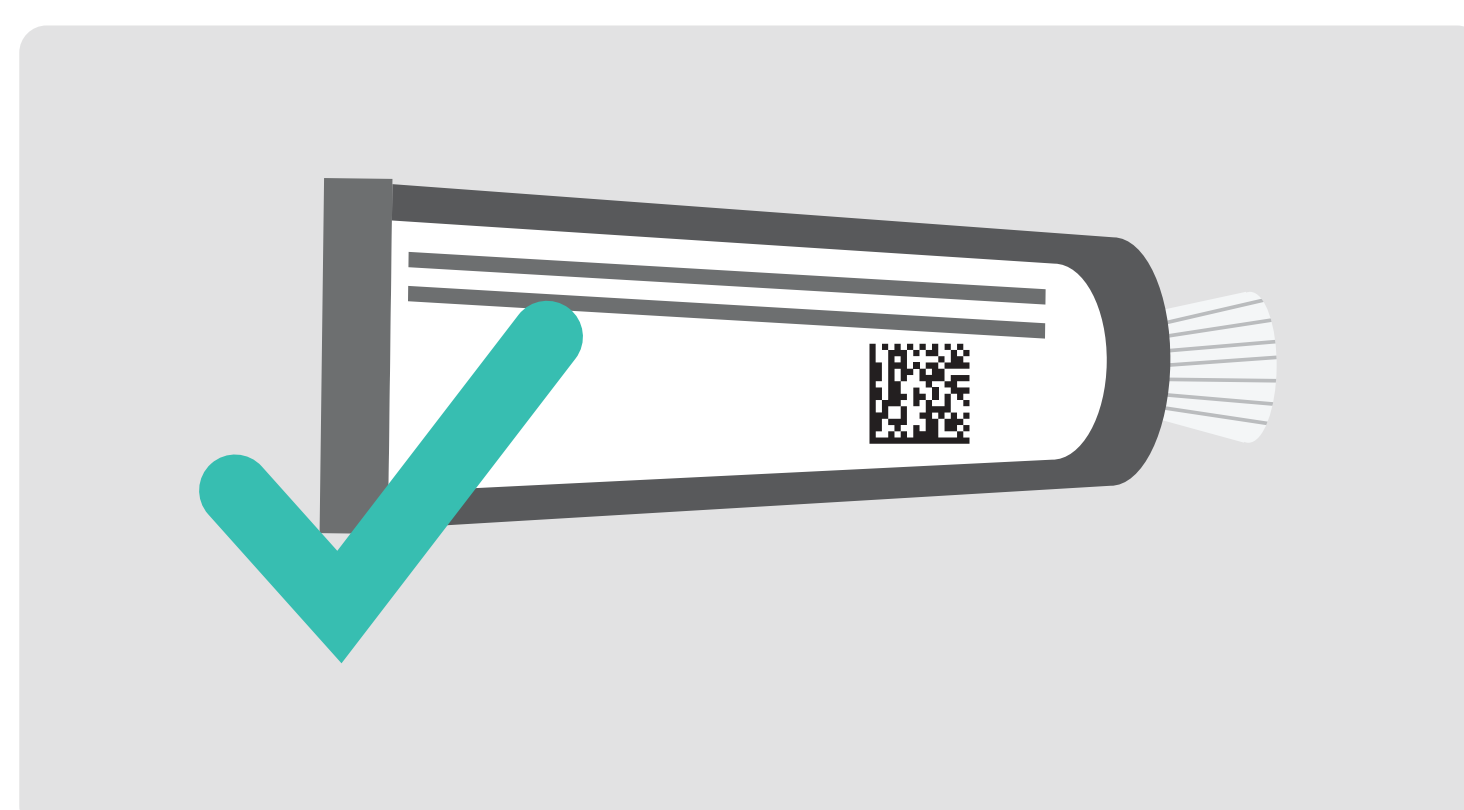


No Barcode



When there is no barcode on the product, it has to be added manually.

Properly Barcoded



When products are properly barcoded, resources are not wasted applying barcode manually.

Poor Background



Cannot scan barcode due to poor background such as a translucent bottle.

Preferred Background



Using a non-reflective background improves success of barcode scanning.

Poor Orientation



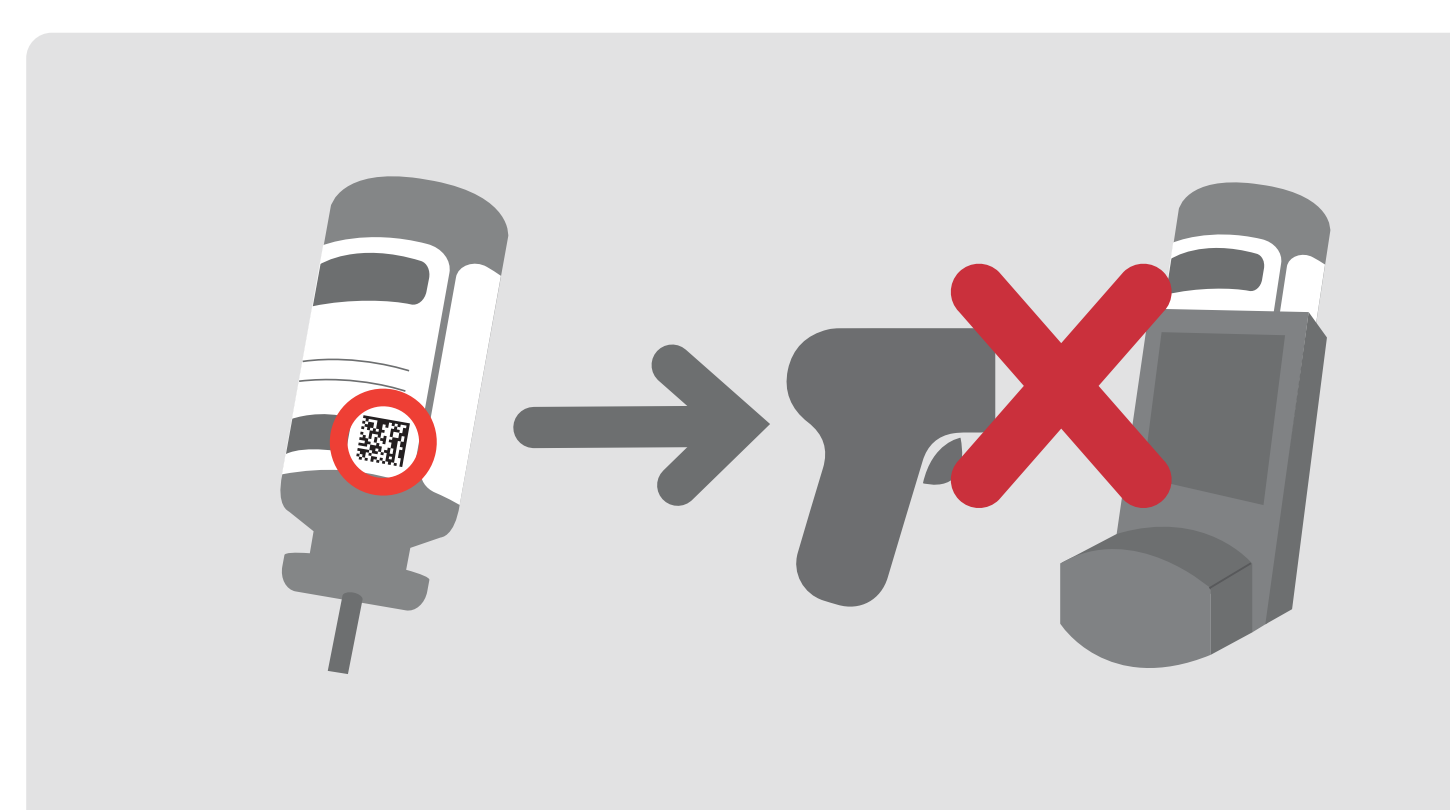
When placed on the curvature of the vial or bottle; the scanner has difficulty reading barcode.

Correct Orientation



Barcode should be placed longitudinally along a flat surface.

Poor Location



Poor placement of barcode requires staff to add a barcode at the top of the canister so the nurse can scan it prior to administration to patient.

Proper Location

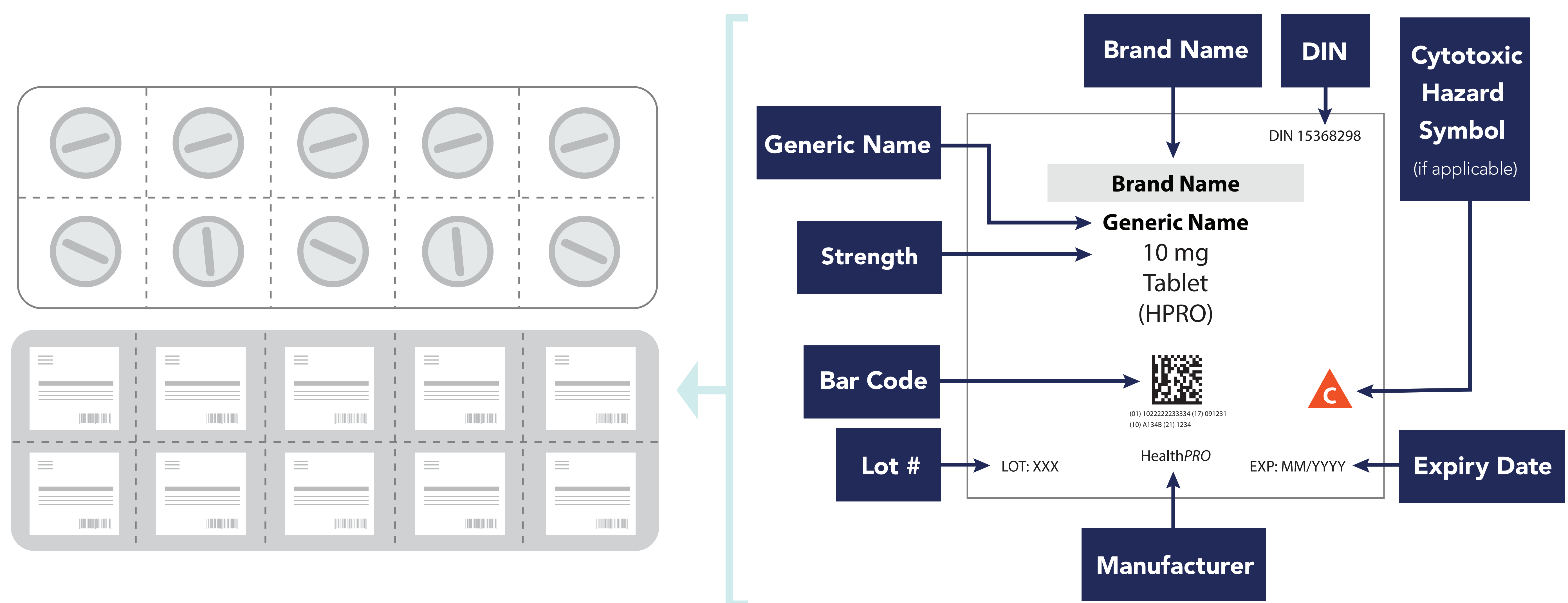


Barcode should be placed where it will be seen when product is fully assembled.



Barcode on Unit-of-Use

What it takes to be "Unit Dose"



GS1 Compliant Barcodes for Healthcare

GS1 Compliant Barcodes have Application Indicators (AI) that separate the information. An Application Indicator is a two digit number that "tells" the barcode scanner what information follows:

- | | |
|-----------------------------|---------------------------|
| (01) GTIN (item identifier) | (17) Expiry Date (YYMMDD) |
| (10) Batch or Lot Number | (21) Serial Number |

Application indicators are in parentheses in the human readable identifier, but not encoded in the machine readable data carrier (barcode).

Linear



2D Matrix

